

Multiple Norms for Clustering of Mobile Agents in Wireless Sensor Networks

LingaRaj.K¹, Aradhana.D², Lokesh.K.S³

¹Department of CSE, Rao Bahadur Y. Mahabaleswarappa Engineering College, Bellary, Karnataka, India

²Department of CSE, Ballari Institute of Technology & Management, Bellary, Karnataka, India

³Department of ECE, R. Y. M. Engineering College, Bellary, Karnataka, India

ABSTRACT

Wireless sensor networks efficient collection data with hundreds and thousands of sensor nodes is very complex task. Recently, mobile agents have been proposed for efficient data dissemination in sensor networks. In the traditional client/server-based computing architecture, data at multiple sources are transferred to a destination; whereas in the mobile-agent based computing paradigm, a task specific code traverses the relevant sources to gather data for further processing. Mobile agents can be used to greatly reduce the communication cost, especially over low bandwidth links, by moving the processing function to the data rather than bringing the data to a central processor. Agents have capability to perform task for multiple applications. It will send only useful information to, destination node. The problem is to group similar mobile agents into a number of clusters such that each cluster has similarity in responding to a group of nodes. By clustering intelligent mobile agents, it is possible to reduce the cost of time for each individual agent, decrease the demand imposed on network for a set of required tasks, decrease total number of visits. This paper, we present the problem of Multiple Norms for Clustering of Mobile Agents where the decision is to cluster mobile agents such that a group of similar intelligent mobile agents will visit a group of similar sensor nodes

Keywords: *Wireless sensor networks, Mobile Agents, Clustering.*

1. INTRODUCTION

Wireless Sensor Network (WSN) has received much attention in the research field in last few years. Sensors are expected to be inexpensive and can be deployed in a large scale over the network of operation. A wireless sensor network (WSN) [1] consists of spatially distributed autonomous sensors to cooperatively monitor physical or environmental conditions, such as temperature, sound, vibration, pressure, motion or pollutants. The development of WSNs was motivated by military applications, such as battlefield surveillance. They are now used in many industrial and civilian application areas, including industrial process monitoring and control, machine health monitoring, environment and habitat monitoring, healthcare applications, home automation, and traffic control. A fundamental concept of WSN is that all sensor nodes are distributed in specific area and they remain fixed in their respective position. Sink sensor node gather information about environment, compute it and then send it to clients. Energy efficient data delivery and security is crucial as sensor nodes operate with limited battery power. Although there has been an extensive research work done toward energy efficiency of WSN. The traditional data dissemination method that follows the client-server based paradigm, where the occurrences of certain events trigger surrounding source nodes to collect and send data to the sink individually. In the client-server paradigm, the number of data flows is

generally equal to the number of the source nodes, leading to high bandwidth and energy consumption. Furthermore, this approach could lead to unbalanced energy consumption in the network, due to the fact that nodes closer to the sink forward more data on behalf of other nodes. A lot of research has been done on power utilization in WSN. Various researchers have identified different routing algorithms, scheduling algorithms, load balancing techniques, clustering schemes etc. in order to improve life span of WSN. There also exist some problems in WSN:

- Path loss due to low bandwidth
- More energy consumption

The data collection approach in WSN can be classified into multi path approaches, query propagation approaches, and mobile agent approaches. Multipath approaches achieve a high degree of reliability by making use of multiple paths to send information from every sensor node to the collection point.

1.1 The Concept of Mobile Agent

To meet the above challenges the concept of mobile agents has been proposed. To solve the problem of the overwhelming data traffic, bandwidth, Hairong et al, [9] proposed a mobile agent based distributed sensor network

(MADSN) for scalable and energy-efficient data aggregation. Mobile Agents can be used in mobile computing environment for network control and management. The use of mobile agents to dynamically deploy new applications in WSNs is proving to be an effective method to address this challenge. A mobile agent is a special kind of software or computer program that migrates between the nodes of a network to perform a task (or tasks) autonomously and intelligently, in response to changing conditions in the network environment, to realize the objectives of the agent dispatcher. It is proved that mobile agent implementation can save up to 90 percents of data transfer time due to avoiding the raw data transfer, Feiyi Wang et al. [5]. Mobile agents are a distributed computing paradigm based on code mobility for high effectiveness and efficient in IP-based highly dynamic distributed environments A.R. Silva [2]. The two attributes SinkID and MA_SeqNum are used to identify an MA packet.

Whenever the Sink sends a new MA packet, it increments the MA_SeqNum. The SrcList list specifies the node itinerary LCF or GCF to be visited by the MA. NextSrc specifically determines the sequence of node identifiers that must be visited by the MA [7][8]. All mobile agents have the features: timer, navigation algorithm, network information, and above all stability of the network and load traffic of network.

A mobile agent-based distributed sensor network (MADSN) [13] was the first proposed mobile agent-based paradigm that could be adopted in both hierarchical and flat WSNs. As in the flat WSNs shown in Fig. 1a, the sink (i.e., the processing center in [13]) dispatches a specific number of mobile agents to directly collect data in the target region. In [13], source nodes are assumed to be in proximity to the sink. In a case where source nodes are far away from the sink, each agent carrying the mobile code can migrate a long distance before visiting the first source node. The large overhead of sending the mobile codes from the sink every time is not only unnecessary, but also weakens the benefit of using mobile agents. Thus, we propose a novel architecture called mobile agent-based WSN (MAWSN) [13].

To better illustrate the agent operation in MAWSN, we give the following analogy. As shown in Fig. 1b, only one mobile agent, referred to as the mother agent, is dispatched from the sink to the target region. The mother agent is analogous to an aircraft carrier. Initially, the mother agent carries the mobile code to a node within the target region and stays there, similar to an aircraft carrier anchoring in the operational theatre. Then, the mother agent launches a number of child agents to execute specific task(s) in sensor nodes within the target region.

A child agent, similar to an aircraft going to specific targets, will visit the assigned set of source nodes one by one in a round of data collection and aggregation and

carry the collected data either to the mother agent or to the sink directly.

To initiate new rounds of data collection, new child agents are launched periodically by the mother agent according to the desired data reporting rate. To reduce latency, multiple child agents also can be launched by the mother agent simultaneously to carry out task(s) in parallel. In MAWSN, the use of mobile agents enables three levels of information redundancy reduction [6] as follows:

- Node level: The raw data, generated by individual source nodes, are reduced by child agent assisted local processing. Then, only relevant information is forwarded to the sink.
- Child agent level: It has been shown that when nodes are in close geographical proximity, their measurements display a high degree of correlation. Thus, data aggregation is performed to reduce the redundancy of the sensory data from a single event when the child agent visits source nodes in the vicinity of the event one by one.
- Mother agent level: After multiple child agents return to the mother agent, the mother agent can further reduce the redundancy that exists in the collected data by various child agents.

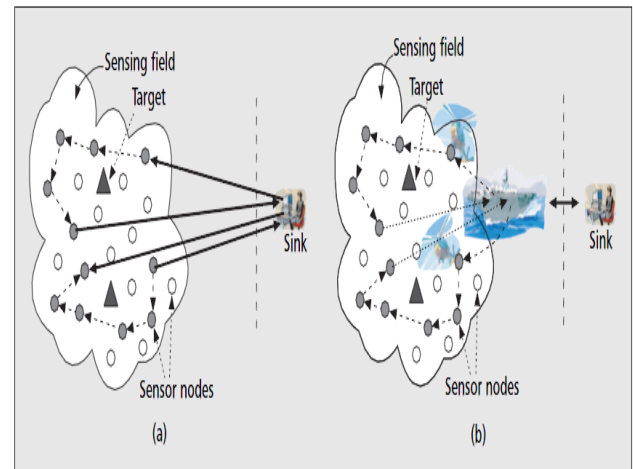


Figure 1. Mobile-agent-based architecture in flat sensor networks: a) MADSN; b) MAWSN.

1.2 Clustering of Mobile Agents

Cluster analysis is concerned with the grouping of alternatives into homogeneous clusters (groups) based on certain features. Three well-known clustering strategies are hierarchical clustering (Pandit, Srivastava, and Sharma 2001; Dias, Costa, and Climaco 1995), graph-theoretic methods (Matula 1977) and conceptual clustering (Michalski and Stepp 1982, 1983).

Conventional clustering approaches involve two main factors: 1) distance (or dissimilarity) measurement, and 2) cluster centres. Head node has id information of nodes in its cluster. When the head node generates agents, the agent can have the id information of nodes that should pass. And the agent migrates to the nodes in pass route. And the agent also contains the information of neighboring nodes that are not included in the route. If node in route has the problems, the agent migrates to neighbouring node through the neighbouring information. By clustering mobile agents, cost of time for each agent to travel to its required routers, can be reduced. Routers have certain capabilities and can process certain requests of each intelligent agent. We propose in our present work a new application to clustering. We discuss how clustering methods can be applied and used for Multiple Norms for Clustering of Mobile Agents in Wireless Sensor Network communication network problems. Intelligent agents are grouped into cluster in such a way that each cluster has similarity in responding to a group of routers. In this way it helps to reduce demand imposed upon a network for a set of required task to be performed.

2. RELATED WORK

Since sensor network works with limited energy, there has been an extensive research work toward energy efficiency of sensor. Liang Zhao [11] proposed a Medium-contention based Energy-efficient Distributed Clustering (MEDIC) scheme, through which sensors self-organize themselves into energy-efficient clusters by bidding for cluster headship. Sudhir [12] focuses on use of classification techniques using neural network to reduce the data traffic from the node and thereby reduce energy consumption. Low Energy Adaptive Clustering Hierarchy (LEACH) algorithm is applied to decompose the network into clusters, with one head for each. The main purpose of this technique is to collect the data by a mobile agent and to send them together to minimize the transmission. A number of papers have proposed algorithms for data Compression/Decompression (C/D) to reduce the amount of data transmitted by the sensors. The MA is a special kind of software that propagates over the network either periodically or on demand (when required by the applications). It performs data processing autonomously while migrating from node to node. Q. Wu et. al.[14]. In [15] Costas Tsatsoulis et al says that instead of one centralized and usually very large system that assumes the complete control and intelligence of the network, a number of smaller systems, or agents, can be used to help manage the network in a cooperative manner. This has motivated the multi agent systems (MAS) in telecommunication networks. The use of MAs in computer networks has certain advantages and disadvantages like code caching, safety and security, depending on the particular scenario. A lot of research has been done on power utilization in WSN various researchers have identified different clustering methods,

routing algorithms, scheduling algorithms and load balancing algorithms.

In our proposed work, it is assumed that sensor network is divided into clusters. In traditional client/server approach, data is transmitted directly to sink node which will reduce the life span of sensor network. To overcome this approach clustering approach is used, in which sensors are clustered using clustering algorithm. Sensor nodes send all sensed data to sink node whether all data is necessary or not. This approach requires a lot of bandwidth and increase network traffic. Mobile Agent is programmers which move sensor to sensor to gather information and transfer only specified information to sink node. This approach requires low bandwidth and reduces network traffic. Cost effective migration path is defined by the gateway as mobile agents visit the WSN. In this paper, Mobile Agents are divided into clusters based on multiple criteria. Then an incidence matrix is created and then agents are clustered using some rules defined below. The clustering of multiple criteria alternatives can also bring the following benefits:

- (1) It decreases the set of alternatives - since the Decision Maker may be interested in only those alternatives with similar kinds of features and discard other alternatives.
- (2) It decreases the number of criteria - when evaluating alternatives of one group, the Decision Maker does not need to consider all criteria since one or more criteria values of the alternatives in the same group are equal or very close.
- (3) It provides a basis for more in-depth evaluation of alternatives - once one set of clustered alternatives are selected then this set can be explored in more depth for analysis, selection, and implementation purposes.
- (4) It may provide a basis for analyzing multiple criteria problems. Each decision maker may cluster alternatives differently, and hence, clustering of alternatives may provide a basis for negotiation.
- (5) In case of selection of a group of alternatives, each decision maker can be in charge of one clustered group;

Hence the designated decision maker selects the best solution from each clustered group Miettinen and Salminen (1999) or Malakooti and Raman (2000).

3. CLUSTERING OF MOBILE AGENTS

There are two hierarchical levels of agents: load management agents and parent agents. The load management agent visits every node in the network

efficiently using Dijkstra’s shortest path algorithm and it collects the necessary information to determine the optimal routes from all other nodes to that particular node. The parent agents control the next management level. They travel around the network and launch load agents where network management is needed. In this paper we use load management agents for collecting needed information from each and every node.

Each router has certain capabilities to process certain requests or needs of each intelligent agent. The problem is to group the intelligent mobile agents into a number of clusters such that each cluster has similarity in meeting router demands. Suppose that an intelligent mobile agent must visit a certain number of routers in order to complete the task that it is assigned to. If required, additional agents can be assigned of identical capabilities. Such acquiring will increase cost .Hence each agent can be duplicated. In a simpler way, the procedure is to find cluster center Cr and then cluster all alternative objects into a group according some rules. First of all, we define similarity measurement d(X, C) as the generalized Euclidean distance between objects Xi and center Cr, r=1, 2, 3, 4.....n [7].

$$d(X_i, C_r) = \sqrt{k_1(x_1 - c_{1r})^2 + k_2(x_2 - c_{2r})^2 + \dots + k_m(x_m - c_{mr})^2}$$

Where k1, k2.....km are the generalized Euclidean distance, the coefficients k = {ki: i = 1, ... m} can be used to represent indirectly the important index of each attribute of the alternatives. An objective X belongs to cluster r if and only if d(X, Cr) < d(X, Ct) | t = 1, 2... R and t < r.

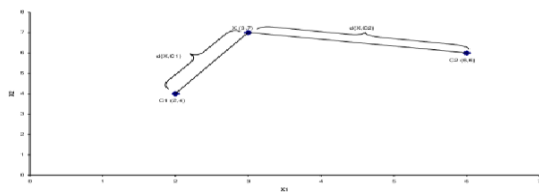


Figure 2. Example of Cluster Memberships

Clustering Algorithm steps:

Step 1: Consider unclassified wireless sensor network area of (X*Y) meter having N number of routers and M number of agents.

Step 2: Sink node dispatch mobile agents with requirement of specific task to wsn. Mobile agent migrates from first to last sensor node to perform specified task.

Step 3: Route table of agents is created corresponding to their routers.

Step 4: A matrix {Aij} called router-agent incidence matrix is created which has i rows of routers and j columns of agents. An element aij of matrix {Aij} is 1 if agent j requires operation to be performing on router i, otherwise aij is 0.

Step 5: Based on route table and incidence matrix of router-agent family, agents are divided into clusters. Agents perform operations on some specific routers are put into clusters.

Step 6: The few entries outside the diagonal blocks represent operations to be performed out-side the assigned group router cells. These elements are called exceptional elements.

We consider an example and divided into clusters

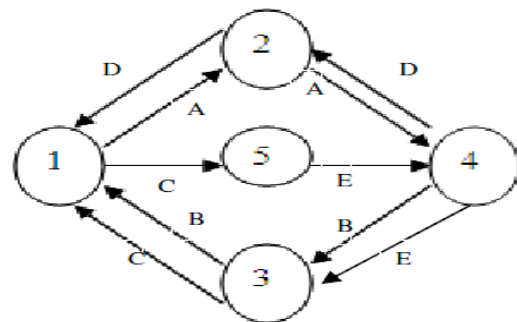


Figure 3. Path of Routes

Table 1: Agents path table

Agent	Routers to visit
A	1→2→4
B	4→3→1
C	3→1→5
D	4→2→1
E	5→4→3

Table 2: (Agent family and visited routers table)

Cluster no.	Routers cells	Agents families
Cluster 1	1,5,3	B,C,E
Cluster 2	2,4	A,D,E

Here Table 1 is divide the agents into two clusters. That is, the primary cluster for handling B, C, E agents corresponding router are 1,5,3 and for A,D,E agents corresponding routers are 2 and 4. Agents B, C, E perform some operation on router 1, 5, 3 and similarly A, D, E on router 2, 4. Here in above example agent E used in both

clusters so if we can afford the cost of more agents then we will acquire additional agents, the duplicated agents.

Table 3. Incidence matrix of router-agent

Agents Routers	A	B	C	D	E
1	1	1	1	1	0
2	1	0	0	1	0
3	0	1	1	0	1
4	1	0	0	1	1
5	0	0	1	0	1

The router-agent cell formation is a strategy to group routers into cells and agents into families. Families of agents can then be completely processed in their corresponding group router cells [10]. The processing of agents on routers can be represented in the form of a matrix called router-agent incidence matrix which has i rows of routers and j columns representing the agents.

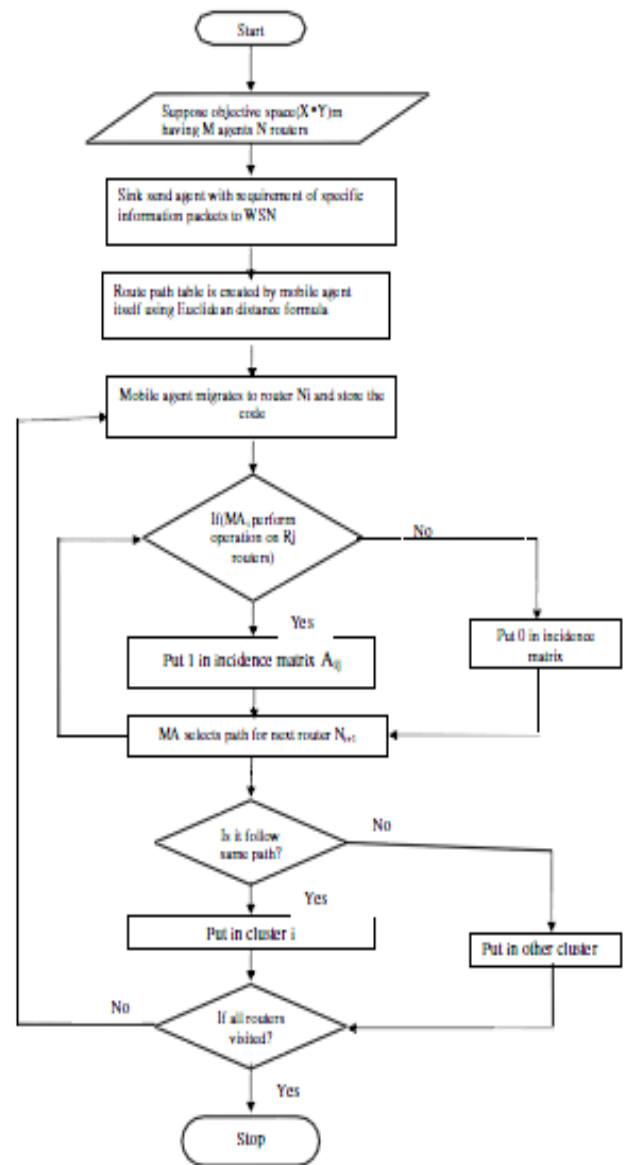
4. EXPERIMENTAL WORK

The proposed work is shown in form of data flow diagram as shown below:

Now we take an example of 15*21 incidence matrix having 15 routers and 21 agents grouping agents into families and routers into cells. Then result show block diagonal matrix which is clusters of agents based on some criteria stated above.

Table 5. Router Agent initially incidence matrix

Agent Routers	1	2	3	4	5	6	7	8	9	10	11	12	13	14	15	16	17	18	19	20	21
1		1				1	1				1					1	1			1	1
2					1				1	1			1		1			1			
3	1			1			1							1					1		
4			1			1								1					1		
5							1	1	1				1		1					1	
6	1						1				1	1									1
7		1						1				1									1
8	1		1	1		1														1	
9	1				1	1								1						1	
10								1	1	1					1						
11		1								1	1										1
12															1	1				1	
13					1			1	1	1			1		1						
14			1																1	1	1
15			1												1	1			1	1	1



Now we divide above incidence matrix of agents and router according agent families and router cells as follows:

Table 7. Clustered Matrix

Routers	Agents																						
	2	7	11	12	20	1	3	4	6	14	18	5	8	9	10	13	15	16	17	19	21		
1	1	1	1	0	1																1		
6	0	1	1	1	1																		
7	1	1	0	1	1																		
11	1	1	1	1	1																		
3						1	0	1	0	1	1												
4						0	1	0	1	1	1												
9						1	1	1	1	0	1												
5												1	0	1	1	1	1						
8												0	1	1	1	1	1						
10												1	2	1	1	0	1						
13												1	1	1	1	1	1						
12																				1	1	0	
14																				0	1	1	1
15																				1	1	1	1

Table 6. (Agent family and visited Routers table)

Cluster no.	Routers cells	Agents families
1	1,6,7,11	2,7,11,12,20
2	2,5,10,13	5,8,9,10,13,15
3	3,4,8,9	1,3,4,6,14,18
4	12,14,15	16,17,19,21

The resultant matrix after grouping (according above table) has four distinct router-agent cells. Table 6 shows that agent family 1, consisting of agents 2, 7, 11, 12 and 20 can be processed in group router cell 1, which contains routers 1, 6, and 7 and 11 in similar ways family 2, consisting agents 1,3,4,6,14,18 process on routers 3,4,9 and in same way family3, 4. Here in table it is show that agents are clustered corresponding to their routers. The few entries outside the diagonal blocks represent operations to be performed outside the assigned group router cells. These elements are called exceptional elements. The corresponding router is called a bottleneck router, and the corresponding agent is called an exceptional agent.

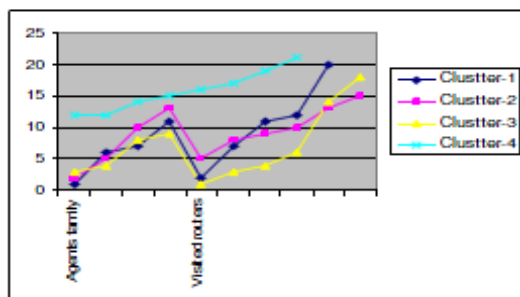


Figure 4.1 Clustering of router Agent family

5. CONCLUSION

We discuss how clusters can be selected and how different alternatives could be clustered into independent clustered groups. In this paper, some fundamental definitions and algorithms are formulated for clustering intelligent mobile agents. We develop a method for Multiple Norms for Clustering of Mobile Agents for wireless sensor network systems. Intelligent mobile agents were introduced as agents those are sent to routers to carry out a set of required tasks. When clustering intelligent mobile agents with similar functional capabilities, the purpose is to minimize cost or travel time of each agent visiting its required routers. It will decrease network load for a set of required tasks to be performed.

REFERENCES

[1] K. Romer and F. Mattern, “The design space of wireless sensor networks,” *IEEE Wireless Communications*, vol. 11, no. 6,
 [2] A.R. Silva, A. Romao, D. Deugo, M. Mira da Silva, “Towards a Reference Model for Surveying Mobile

Agent Systems,” *Autonomous Agent and Multi-Agent Systems*, Vol. 4, N. 3, pp.187–231,

[3] M.Bendjima, M.Feham, “Intelligent Wireless Sensor Network Management Based on a Multi-Agent System” in proceeding of *International Journal of Computer Science and Telecommunications*, Vol. 3, ISSN 2047-3338, Issue 2, February 2012
 [4] Bernhard Bösch, Rodrigo S. Allgayer “Mobile Agents Model and Performance Analysis of a Wireless Sensor Network Target Tracking Application” in Springer-Verlag Berlin Heidelberg, LNCS 6869, pp. 274–286, 2011
 [5] Hairong Qi and Feiyi Wang “Optimal Itinerary Analysis for Mobile Agents in Ad hoc Wireless Sensor Networks”, published in the 13th international conference on wireless communication Canada, Pp-147- 152 July 2001.
 [6] Ankit Jagga, Kuldeep, Vijay Rana, “A Hybrid Approach for Deploying Mobile Agents in Wireless Sensor Network”, in *Proceedings of International Journal of Computer Applications*.
 [7] Malakooti, B., V. Raman, “Clustering and Selection of Multiple Criteria Alternatives using Unsupervised and Supervised Neural Networks”, *Journal of Intelligent Manufacturing*, Vol. 11, 2000,
 [8] Miettinen, K. and P. Salminen, “Decision-Aid for Discrete Multiple Criteria Decision Making Problems with Imprecise Data,” *European Journal of Operational Research*, 119, 50-60. 1999
 [9] Hairong Qi, Yingyue Xu, Xiaoling Wang, “Mobile-Agent Based Collaborative Signal and Information Processing in Sensor Networks,” in *Proceeding of the IEEE*, Vol. 91, NO. 8,
 [10] Chan, H.M. Milner, D.A., “Direct Clustering Algorithm for Group Formation in Cellular Manufacturing,” *Journal of Manufacturing Systems*, 65-75, 1982
 [11] Liang Zhao, Qilian Liang, “Medium-contention based energy-efficient distributed clustering (MEDIC) for wireless sensor networks”, *International Journal of Distributed Sensor Networks*, 3, 2007, 347-369
 [12] Sudhir G. Akojwar, Rajendra M. Patrikar, “Improving life time of wireless sensor networks using neural network based classification techniques with cooperative routing”, *International Journal of Communications*, vol. 2, no. 1, 2008

- [13] M. Chen, S. Gonzalez, and V. Leung, “Applications and design issues for mobile agents in wireless sensor networks,” *Wireless Communications, IEEE*, vol. 14, no. 6, pp. 20–26.
- [14] Wu, Q., Rao, N.S.V., Barhen, J., etc, “On computing mobile agent routes for data fusion in distributed sensor networks,” *IEEE Transactions on Knowledge and Data Engineering*, Vol.16, NO. 6,
- [15] Costas Tsatsoulis and Leen-Kiat Soh, “Intelligent Agents in Telecommunication Networks”, *Computational Intelligence in Telecommunications Networks*, W. Pedrycz and A.V. Vasilakos (Eds.), CRC Press, 2000